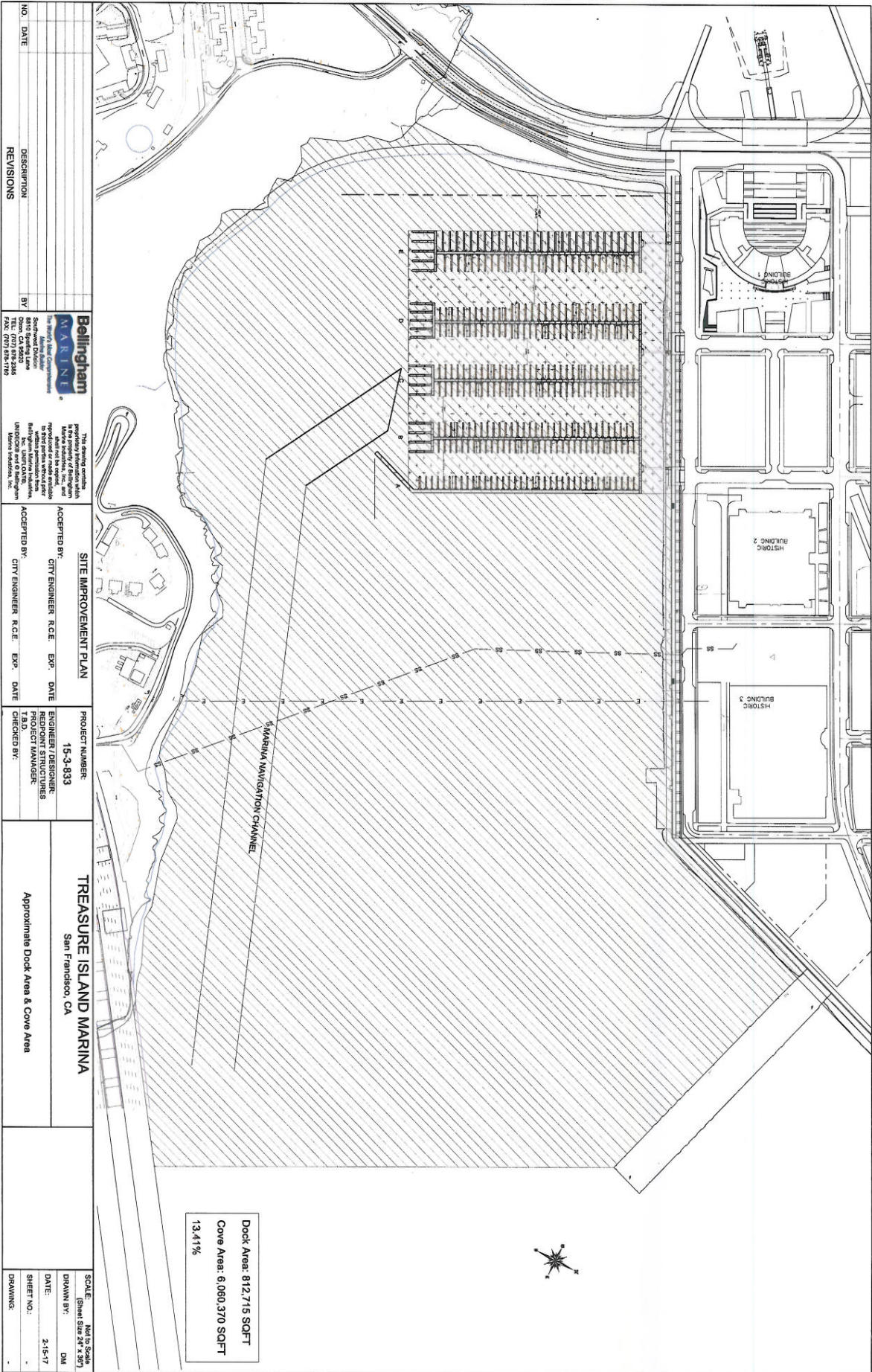
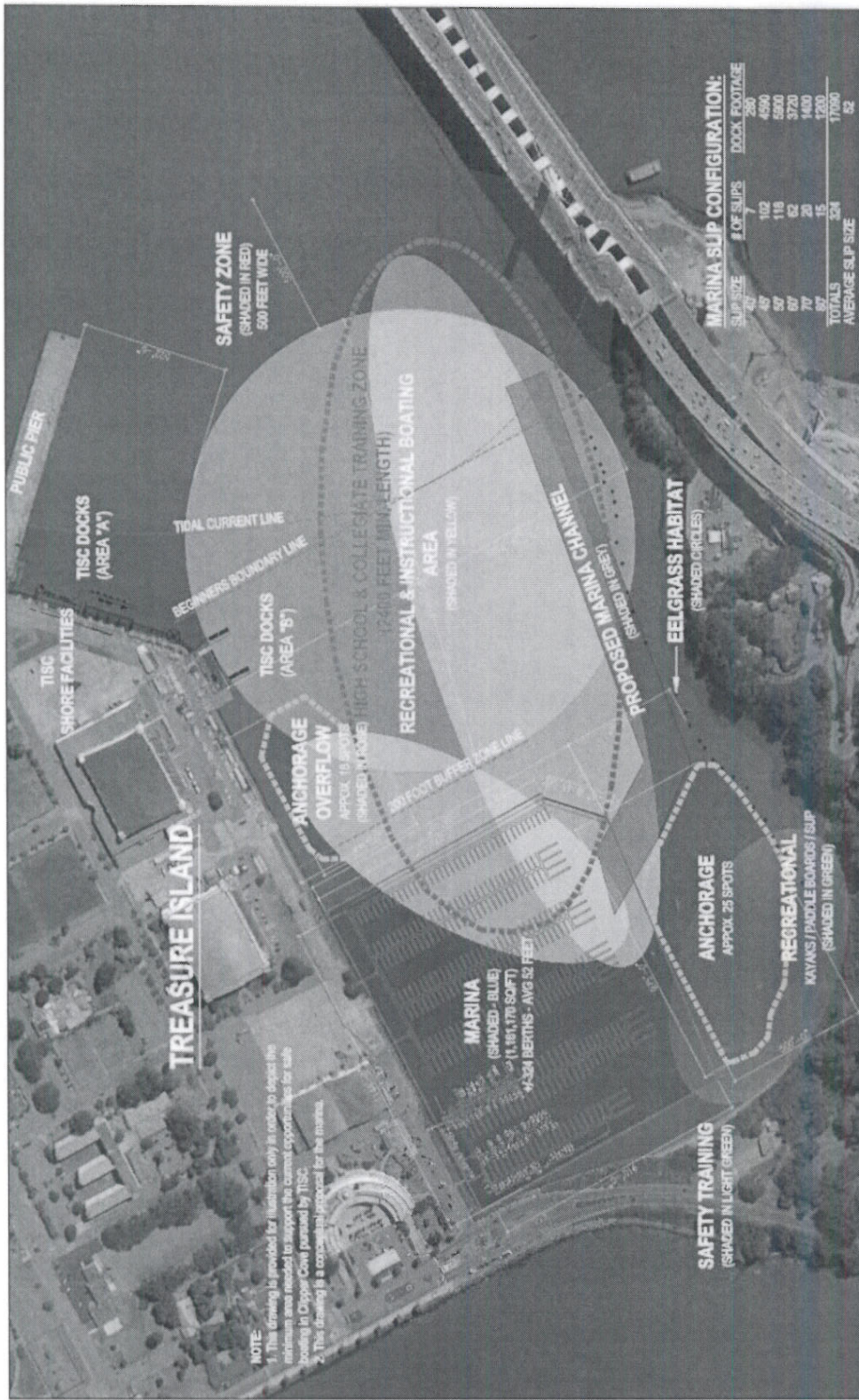


PRELIMINARY - NOT FOR CONSTRUCTION



NO. DATE	DESCRIPTION	BY	<p>Bellingham MARINE 15000 Sausalito Blvd Sausalito, CA 94965 Phone: (415) 456-1198 Fax: (415) 456-1199</p>	This drawing contains preliminary information which is not intended to be used for construction. It is the responsibility of the user to verify the accuracy of the information and to obtain the latest project information from the project manager. Bellingham Marine is not responsible for any errors or omissions in this drawing. Bellingham Marine, Inc.	
				SITE IMPROVEMENT PLAN ACCEPTED BY: CITY ENGINEER R.C.E. EXP. DATE ACCEPTED BY: CITY ENGINEER R.C.E. EXP. DATE	PROJECT NUMBER: 15-3-8333 ENGINEER/DESIGNER: PROJECT STRUCTURES PROJECT MANAGER: CHECKED BY:
TREASURE ISLAND MARINA San Francisco, CA Approximate Dock Area & Cove Area			SCALE: Not to Scale (Sheet Size 24" x 36") DRAWN BY: DM DATE: 2-15-17 SHEET NO.: - DRAWING: -		

Dock Area: 812,715 SQFT
 Cove Area: 6,060,370 SQFT
 13.41%



A25C
 10-17-2016 #

Site Plan

Treasure Island Sailing Center
 Treasure Island
 California

Sailing Area Review
 N I L S E N architecture Planning Interior Design