

SAN FRANCISCO

BAY



PUMPOUT GUIDE & MAP

FOR

BOATERS

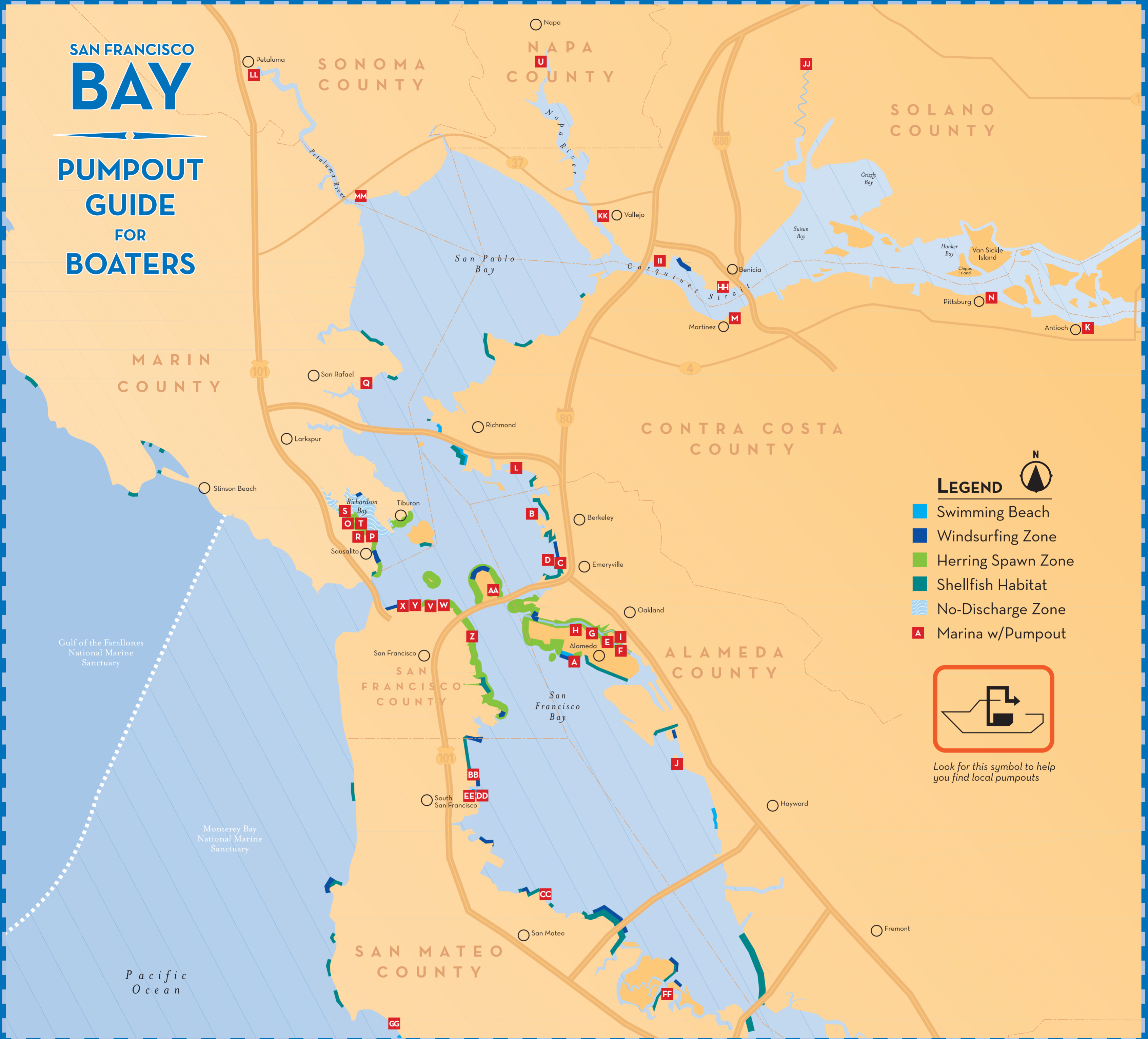
2011 - 2012



Published by the California Department of Boating & Waterways
and the San Francisco Estuary Partnership

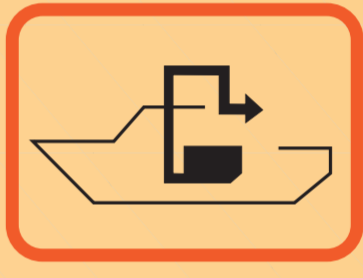
SAN FRANCISCO BAY

PUMPOUT GUIDE FOR BOATERS



LEGEND

- Swimming Beach
- Windsurfing Zone
- Herring Spawn Zone
- Shellfish Habitat
- No-Discharge Zone
- Marina w/Pumpout



Look for this symbol to help you find local pumpouts

DON'T DUMP... USE THESE PUMPS

NOT FOR NAVIGATIONAL PURPOSES

MARINA WITH PUMPOUT	LOCATION	PUMPOUT COST	HOURS	PORTA/POTTY DUMP	PUBLIC RESTROOMS
ALAMEDA COUNTY					
A BALLENA ISLE MARINA	1150 Ballena Blvd., Ste. 111, Alameda, CA 94501	510-523-5528	Fuel dock	Free	24 hrs. No Yes 8:30-5
B BERKELEY MARINA	201 University Ave., Berkeley, CA 94710	510-981-6740	End of I dock, G dock & C dock	Free	24 hrs. No Yes
C EMERY COVE YACHT HARBOR	3300 Powell St., Emeryville, CA 94608	510-428-0505	A dock/S dock	Free	24 hrs. Use pumpout station Yes
D EMERYVILLE MARINA	3310 Powell St., Emeryville, CA 94608	510-654-3716	Fuel dock	Free	24 hrs. No Yes
E FORTMAN MARINA	1535 Buena Vista, Alameda, CA 94501	510-522-9080	Near harbor master's office	Free	24 hrs. No Yes
F GRAND MARINA	2099 Grand St., Alameda, CA 94501	510-865-1200	Below harbor master's office	Free	24 hrs. No Yes
G MARINA VILLAGE YACHT HARBOR	1030 Marina Village Dr., Alameda, CA 94501	510-521-0905	Docks 8 & 10	Free	24 hrs. No Yes
H MARINER SQUARE MARINA	2415 Mariner Square Dr., Alameda, CA 94501	510-521-2727	Dock 39	Free	24 hrs. No Yes
I OAKLAND MARINA	7 N. Court St., Oakland, CA 94607	510-834-4591	North Basin, Jack London Sq & Union Point Basin	Free	8:30-5 Pumpout wand Yes
J SAN LEANDRO MARINA	40 Mulford Point Dr., San Leandro, CA 94577	510-577-3488	Fuel dock	Free	24 hrs. No Yes Daylight Hours
CONTRA COSTA COUNTY					
K ANTIOCH MARINA	5 Marina Plaza, Antioch, CA 94509	925-779-6957	Guest dock & fuel dock	Free	24 hrs. Pumpout wand at fuel dock Yes 8-4 M-F, 8-5 SS
L MARINA BAY YACHT HARBOR	1340 Marina Way South, Richmond, CA 94804	510-236-1013	End of G dock & top of D dock	Free	24 hrs. No Yes 9-5
M MARTINEZ MARINA	7 N. Court St., Martinez, CA 94553	925-313-0942	Fuel dock	Free	24 hrs. No Yes 8-4-45
N PITTSBURG MARINA	51 Marina Blvd., E., Pittsburg, CA 94565	925-439-4958	Fuel dock	Free	24 hrs. No Yes 8-5
MARIN COUNTY					
O CLIPPER YACHT HARBOR	310 Harbor Dr., Sausalito, CA 94965	415-332-3500	Fuel dock	Tenants free; others \$5	8-11:30 and 2-4 Yes Yes behind Salty's
P GALILEE HARBOR	300 Napa St., Sausalito, CA 94965	415-332-8554	End of S dock	\$5	10-4 No No
Q LOCH LOMOND MARINA	110 Loch Lomond Dr., San Rafael, CA 94901	415-454-7228	Fuel dock	Free	24 hrs. Yes Yes
R MARINA PLAZA HARBOR	2320 Marinship Way, Sausalito, CA 94965	415-332-4723	In marina & end of B dock	Free	9-5 No Yes
S RICHARDSON BAY MARINA	100 Gate 6 Rd., Sausalito, CA 94965	415-332-5510	C dock	Free	24 hrs. No Yes
T SCHOONMAKER POINT MARINA	85 Liberty Ship Way, Sausalito, CA 94965	415-331-5550	A dock	Free	8-4 No Yes 8-8
NAPA COUNTY					
U NAPA VALLEY MARINA	1200 Milton Rd., Napa, CA 94559	707-252-8011	Fuel dock	\$5	8-5 No Yes

MARINA WITH PUMPOUT	LOCATION	PUMPOUT COST	HOURS	PORTA/POTTY DUMP	PUBLIC RESTROOMS
SAN FRANCISCO COUNTY					
V FISHERMAN'S WHARF MARINA	Foot of Hyde St., San Francisco, CA 94123	415-673-2928	Fuel dock	Free	By appointment No No
W PIER 39 MARINA	Pier 39, San Francisco, CA 94133	415-705-5436	A dock	Free	24 hrs. Use pumpout station Yes 8-11
X SAN FRANCISCO MARINA - GASHOUSE COVE	3950 Scott St., San Francisco, CA 94123	415-831-6322	Fuel dock	Free	24 hrs. Yes Yes
Y SAN FRANCISCO MARINA - WEST HARBOR	3950 Scott St., San Francisco, CA 94123	415-831-6322	Pumpout Dock	Free	24 hrs. Yes Yes
Z SOUTH BEACH HARBOR	The Embarcadero, Pier 40, San Francisco, CA 94107	415-495-4911	East end of south guest dock, East end of north guest dock	Free	24 hrs. No Yes
AA TREASURE ISLE MARINA	1 Clipper Cove Way, San Francisco, CA 94130	415-981-2416	Southern end of D dock	Free	24 hrs. No Yes
SAN MATEO COUNTY					
BB BRISBANE MARINA	Sierra Point Parkway Brisbane, CA 94005	650-583-6975	Pier 1	Free	24 hrs. Yes Yes
CC COYOTE POINT MARINA	1900 Coyote Point Dr., San Mateo, CA 94401	650-573-2594	Guest dock	Free	24 hrs. No Yes
DD OYSTER POINT MARINA	95 Harbormaster Rd., #1, So. San Francisco 94080	650-952-0808	Fuel dock	Free	8-6 Yes Yes
EE OYSTER COVE MARINA	385 Oyster Point Blvd., S. San Francisco, CA 94080	650-952-5540	Dock 5	Free	24 hrs. No Yes
FF PORT OF REDWOOD CITY YACHT HARBOR	451 Seaport Ct., Redwood City, CA 94063	650-363-1390	End of C dock	Free	24 hrs. No Yes
GG PILLAR POINT MARINA	One Johnson Pier, Half Moon Bay, CA 94019	650-726-4382	Fuel dock	Free	24 hrs. Yes Yes
SOLANO COUNTY					
HH BENICIA MARINA	266 East B St., Benicia, CA 94510	707-745-2628	Fuel dock	Free	24 hrs. No Yes
II GLEN COVE MARINA	2000 Glen Cove Rd., Vallejo, CA 94591	707-552-3236	Dock 8	Free	24 hrs. No Yes
JJ SUISUN CITY MARINA	800 Kellogg St., Suisun City, CA 94585	707-429-BOAT	End of fuel dock	Free	24 hrs. No Yes
KK VALLEJO MUNICIPAL MARINA	42 Harbor Way, Vallejo, CA 94590	707-648-4370	J dock & fuel dock	\$10 for non-berthers	24 hrs. No Yes 9-5
SONOMA COUNTY					
LL PETALUMA MARINA	781 Baywood Dr., Petaluma, CA 94954	707-778-4489	End of A dock	Free	24 hrs. No Yes
MM PORT SONOMA MARINA	270 Sears Point Rd., Petaluma, CA 94952	707-778-8055	Near harbor master's office	Free	By appointment Yes Yes
MOBILE PUMPOUT SERVICE					
BAYGREEN MARINE SANITATION SERVICES	415-621-1393	www.baygreen.net	Varies	Varies	8-5
HEAD HONCHO MOBILE MARINA PUMPOUT SERVICE	925-429-4490	www.head-honcho.net.com	Varies	Varies	Varies
MARINE SERVICE CORPS	510-629-4185	www.marineservicecorps.com	Varies	Varies	By appointment
MT HEAD MARINE SANITATION SERVICE	650-483-5689	www.mthead.com	Varies	Varies	Varies see web site

This guide was produced by the San Francisco Estuary Partnership in cooperation with the California Department of Boating and Waterways under a grant from the Clean Vessel Act. The San Francisco Estuary Partnership is a cooperative federal/state program whose primary goal is to promote environmentally sound management of the Bay and Delta. A variety of free boater education and pollution prevention materials is available from the Estuary Partnership. Call (800) 622-2106.

The mission of the Department of Boating and Waterways is to provide safe and convenient public access to California's waterways. Visit www.dbwca.gov or call (888) 326-2822 to order free boating educational materials.

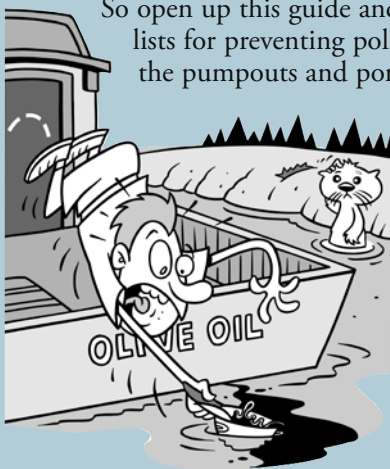
The Scuttlebutt

Captain your boat the clean way! Follow the tips in this guide for running a tight ship, and you can avoid such indelicacies as flushing your head into a school of stripers or spilling bilge oil into the sparkling blue deep. With these tips in mind and this map in hand, you can help keep our waters clear and clean for everyone who boats, sails, surfs, skis, swims, and fishes in San Francisco Bay and the Delta.

As of 2007, there were 964,881 registered boats* in California — enough to make a sizable impact on water quality.

While the amount of sewage pollution contributed by boaters isn't enormous, it does impact the health of human water users and the Bay-Delta ecosystem. Swimmers, windsurfers, or boaters who come in contact with raw sewage can get stomach aches, diarrhea, skin rashes, hepatitis, and even typhoid or cholera. Diners with a taste for raw clams, oysters, or mussels face some of the same perils if the shellfish have been contaminated with sewage. Fish can die when the biological processes that break down sewage steal too much oxygen from their waters.

Sewage is not the only problem. Today, many of the products we use to run and maintain our homes, gardens, workplaces, vehicles, and even boats are ending up in our creeks, rivers, and bays — the same watersheds that provide drinking water to 22 million Californians and irrigate 4.5 million acres of farmland.



So open up this guide and review its five to-do lists for preventing pollution, and its map of the pumpouts and port-a-potty dump stations

located at marinas and yacht harbors around San Francisco Bay. Then stash your new guide in a handy dry place so you can always find it when you feel like doing your part to keep our Bay a world-class waterway.

Clean Boater's Oath

⚓ I will not use the Bay as a water closet.

⚓ I will pump and dump at a convenient marina receiving station.

⚓ I will use vim and vinegar to swab the decks.

⚓ I will make merry but be wary (accidents lead to spills).

⚓ I will deliver my trash to onshore receptacles.

⚓ I will share these wise words and maps with fellow seadogs and mariners.



Scoop on Poop

- ⚓ A weekend boater flushing untreated sewage into the Bay produces the same amount of bacterial pollution as that of 10,000 people whose sewage passes through a treatment plant.
 - ⚓ Over 100 different intestinal pathogens — viruses, parasites, and bacteria — can be found in sewage.
- ## 10,000:1
- ⚓ Fecal coliform counts dropped from 16,000 per 100ml to 23 per 100ml in California's Avalon Harbor after the harbor launched a boater education and clean water program. As part of the program, dye tablets are deposited in on-board toilets, making illegal discharges highly visible.
 - ⚓ Synthetic hormones (from birth control pills and hormone therapy) secreted via women's urine into waterways can be absorbed by fish, causing physiological changes and affecting the reproductive ability of male fish. Antibiotics and other drugs taken by humans are also turning up in our waterways.

Sources: 1) SF Bay Regional Water Quality Control Board; 2) Managing Wastewater in Coastal Urban Areas, National Research Council, pp. 203-226; 3) Avalon Harbor; 4) Karen Kidd, Winnipeg Freshwater Institute, Gov. of Canada, Fisheries & Oceans



Potty Prep

- ⚓ Before you board, use the shoreside restroom facilities.
- ⚓ Choose one of three U.S. Coast Guard certified types of Marine Sanitation Devices (MSDs) or a port-a-potty to hold or treat your waste (see "The Equipment" for more details).
- ⚓ Look for environmentally friendly disinfectants for your MSD. Whenever possible, choose products with ingredient lists that do not include chlorine, formaldehyde, or other components that can be harmful to aquatic organisms and detrimental to pumpout facilities with septic systems.
- ⚓ Keep your MSD in good operating condition. Make sure all fittings, hoses and other pump mechanisms stay clean and lubricated.
- ⚓ Keep a complete repair kit on board for your particular type of head.
- ⚓ To help prevent clogs look for rapid-dissolving marine toilet tissue specifically designed for MSDs. Post use instructions near the head.



The Equipment

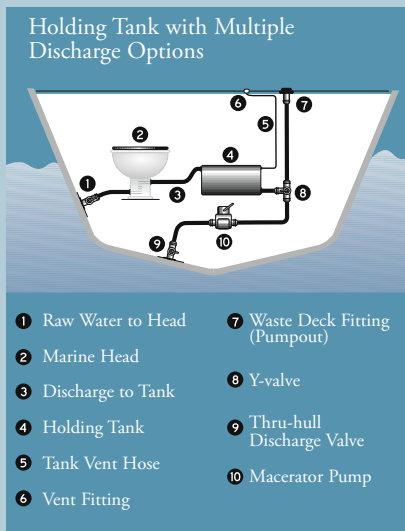
A Marine Sanitation Device (MSD) prevents pollution from the discharge of untreated sewage from a boat. According to U.S. Coast Guard regulations, all boats with an installed toilet must have one of the three types listed below.

Type I and II MSDs break up the sewage and disinfect it with chemicals. It is legal in most instances to discharge from either type directly overboard, but you must add the appropriate chemicals for treatment. Without this treatment, discharge from a Type I or II system is considered raw sewage and remains illegal within the three-mile limit (see *The Rules*).

Type III MSDs, most commonly used by boaters, provide a holding tank for storing untreated sewage until it can be properly disposed of at an onshore pumpout station that connects to a local sewer system. Type III MSDs can also be pumped out by mobile units that dispose of the waste into the sewer system. Adding chemical deodorizers does not constitute treatment and does not allow you to dump wastes overboard.

Some Type III MSDs have a “Y” valve, which allows you to dump directly overboard when you are operating outside the three-mile limit (except within federally designated No-Discharge Areas). Within the limit, you must secure the valve in the closed position with a padlock or non-releasable wire tie or remove the handle entirely.

Typical Type III MSDs



Ins and Outs of Pumping Out

- ⚓ Close nozzle valve on pumpout hose.
- ⚓ Remove deck waste fitting cover from boat (attach nozzle guard to deck waste fitting if available) and insert nozzle.
- ⚓ Turn on pump.
- ⚓ Open nozzle valve. (Valves can be difficult to turn — be persistent!)
- ⚓ Check the flow through the sight glass. If flow doesn't occur within one minute, place the nozzle in water for ten seconds. If there's still no flow, check for an air leak in the line or a plug in the holding tank air vent.
- ⚓ When tank is empty, close the nozzle valve.
- ⚓ Remove the nozzle from the deck fitting.
- ⚓ Turn off the pump and return the hose when you're finished so it will work for the next boater.
- ⚓ Use the pump! Know the location and operation of pumpout and pumpout facilities for marinas you frequent. The map and table inside shows you where to find these facilities around the Delta.
- ⚓ Thank your local marina owner for keeping pumpout facilities in good working order. Report any breakdowns immediately to the marina operator, local environmental health agency, or local boating law enforcement officer.
- ⚓ NEVER discharge untreated sewage wastes into the Delta or Bay.
- ⚓ If you must discharge treated sewage from Type I or II MSDs, avoid sensitive areas of shellfish beds, fish spawning areas, and all areas where people are swimming, windsurfing, or water skiing. Never discharge in shallow bays, marinas, or places with little water movement or tidal flushing.
- ⚓ Be aware that Marin County's Richardson Bay is a “No-Discharge Area” where discharge of sewage, treated or untreated, from a vessel is strictly prohibited. When boating in Richardson Bay, a Type I or II MSD must be secured or the toilet sealed to ensure no wastes escape.

Pumpout Pointers

- ⚓ Find a pumpout station. It only takes a few minutes to pump the wastes out of your holding tank. For a free map of the Delta pumpout stations, call (510) 622-2406 or see www.dbw.ca.gov.
- ⚓ Follow pumpout instructions. If instructions aren't posted or aren't clear, ASK! Encourage the marine operator to post easy-to-understand instructions.
- ⚓ Rinse water through the system for one minute once you've finished. Expensive breakdowns commonly occur when the marina's sewer lines get clogged because of inadequate rinsing. Flushing water through the system is cheap preventive maintenance.
- ⚓ Pump out only your holding tank. Pumpouts are not designed to handle bilge water or solid objects.
- ⚓ Turn off the pump when you're finished. Yes, boaters do pump out their holding tanks and then drive off, leaving the unit still running. Make sure the pump is off before pulling away so it will work for the next boater.
- ⚓ Consider using a mobile pumpout service if you don't want to service the holding tank yourself.



PUMPOUT GRANTS

Grants are available to public and private marinas for construction, maintenance, and renovation of pumpout facilities and port-a-potty dump stations through provisions of the Clean Vessel Act of 1992 (covers up to 75% of cost). For more information, call the California Dept. of Boating and Waterways at (888) 326-2822.

The Rules

- ⚓ Discharges of untreated sewage are prohibited within the navigational waters of the U.S. (an area that includes the entire San Francisco Bay and Delta and extends three miles seaward beyond the coast). 33 U.S.C. 1322
- ⚓ Fines of up to \$2,000 can be imposed for illegal discharges. CWA §312 (j)
- ⚓ It is legal to discharge untreated sewage at sea (you must be at least three miles out from the coast) except in the Gulf of the Farallones National Marine Sanctuary, Monterey Bay National Marine Sanctuary, and Cordell Bank National Marine Sanctuary, (see map), which have the same discharge restrictions (no untreated sewage) as inland waters. Title 15, CFR, Sec. 922.82(a)(2)(ii)(A)
- ⚓ All boats with installed toilets must have a U.S. Coast Guard-certified Marine Sanitation Device if operating in U.S. navigational waters. 33 CFR Part 159
- ⚓ Vessels with a Type I or Type II Marine Sanitation Device must treat their sewage before discharge. For a Type I MSD, the fecal coliform count in the effluent must be no greater than 1,000 per 100 milliliters of water and have no visible floating solids. For a Type II MSD, the fecal coliform count must be no greater than 200 per 100 milliliters, and suspended solids no greater than 150 milligrams per liter. 33 CFR Part 159
- ⚓ Discharges of any kind, treated or not, are prohibited in Richardson Bay — a designated No-Discharge Area. 40 CFR Part 140.4
- ⚓ When operating on the navigable waters of any lake, reservoir, or freshwater impoundment, the vessel toilet must be sealed, rendered inoperable, or designed so no human sewage can be discharged in the water. Div.104, Part 13, Chapter A, CHSC
- ⚓ Discharges of oil or other hazardous substances are prohibited within 12 miles of the coast and within fisheries and marine preserves up to 200 miles from the coast under the Clean Water Act. 40 CFR Part 110.6

If it's Your Boat it's Your Responsibility

SWAB & SPILL DRILL

- ↙ Fill your fuel tank carefully, and avoid topping off. Soak up any spills – DO NOT HOSE DOWN.
- ↙ Promptly fix engine and fuel line leaks to prevent oil and fuel spills. Minimize spills before and during repairs by placing a drip pan under the leak. Dispose of your motor oil and used oil filters at a waste oil recycling center.
- ↙ Place a bilge pillow (an oil absorbing sponge or bioremediating boom) in your bilge to remove oil. Remove oily bilge water at a bilge pumpout station.
- ↙ Clean your boat with non-toxic detergents and avoid rinsing into the Bay. Check out “The Alternatives” for non-toxic options to common boat cleaning and maintenance products.
- ↙ Use maintenance methods that prevent pollutants, sanding dust or other debris from being released into the water. Limit in-the-water maintenance and cleaning to times and places where debris can be captured and disposed of properly.

CLOG & CLUTTER CONTROL

- ↙ Avoid chopping vegetation with your boat propeller. Exotic (invasive) plants *Egeria densa* and *hydrilla*, are easily spread this way. Before moving your boat from one lake, bay, or river to another, inspect it for hitchhikers. Then purge your vessel of invasive plant fragments and aquatic critters by flushing and draining your systems, emptying bait buckets, cleaning tackle and gear, and pressure-washing the hull with hot water. Dispose of any debris at on-shore garbage facilities.
- ↙ Stock your boat with reusable cups, plates and other utensils. Avoid plastic and Styrofoam, which can easily blow overboard, and must be hauled to shore for disposal.
- ↙ Retrieve plastic trash, netting, six-pack yokes, and other items from the water and bring them back to the dock. Floating and shoreline trash can not only entangle, injure, or kill marine life, but also damage other vessels.

The Alternatives

PRODUCT	NON-TOXIC APPROACH
DETERGENT & SOAP	Fresh water and a lot of elbow grease
BLEACH	Hydrogen peroxide
SCOURING POWDERS	Baking soda or salt
FLOOR CLEANER	One cup white vinegar in 2 gallons water
WINDOW CLEANER	One cup vinegar in 1 quart warm water
VARNISH CLEANER	Wipe with 1/2 cup vinegar and 1/2 cup water solution
HEAD CLEANER	Brush with baking soda
SHOWER CLEANER	Wet surface, use scouring cloth with baking soda
ALUMINUM CLEANER	Use 2 tablespoons cream of tartar in 1 quart of water
CHROME CLEANER/ POLISH	Apple cider vinegar to clean, baby oil to polish
FIBERGLASS STAIN REMOVER	Baking soda paste
DRAIN OPENER	Disassemble and replace; avoid toxic products
MILDEW REMOVER	Paste of equal parts lemon juice and salt
WOOD POLISH	Use 3 parts olive oil and 1 part white vinegar; almond or olive oil (interior unvarnished wood only)

This guide was produced by the San Francisco Estuary Partnership in cooperation with the California Department of Boating and Waterways under a grant from the Clean Vessel Act. The information presented in this guide is accurate to the best of our knowledge. The San Francisco Estuary Partnership assumes no responsibility and disclaims any liability for any injury resulting from the use or effect of any product or information in this publication.

The Green Pages

EMERGENCY

911 or Channel 16 (VHF)

WATER QUALITY AND SEWAGE SPILLS

San Francisco Bay Regional
Water Quality Control Board
(510) 622-2300

BOATING INFORMATION

California Department of
Boating and Waterways
(888) 326-2822

San Francisco Estuary
Partnership (510) 622-2406

COUNTY POLICE & SHERIFF BOAT/MARINE UNITS

Alameda (510) 667-7721

Contra Costa (925) 646-2441

Marin (415) 479-2311

San Francisco (415) 554-7225

San Mateo (650) 363-4911

Santa Clara (408) 299-2311

Solano (707) 421-7090

Sonoma (707) 565-2121

U.S. Coast Guard
(415) 399-3455

OIL SPILLS

California Emergency
Management Agency
(800) OILS-911

OIL RECYCLING

(800) CLEAN-UP
www.earth911.com

PUMPOUT INFORMATION

For the nearest pumpout
station in California see:
www.dbw.ca.gov and click on
'Clean and Green'

BOATING SAFETY

U.S. Coast Guard
www.uscgboating.org

California Dept. of
Boating and Waterways
www.dbw.ca.gov

BOATING SAFETY CLASSES

U.S. Coast Guard
<http://nws.cgaux.org>

U.S. Power Squadron
(919) 821-0281

FISH & WILDLIFE

California Dept. of Fish &
Game Hotline (CalTip)
(888) 334-2258

National Invasive
Species Hotline
(877) 786-7267

Marine Mammal Center
(injured animals)
(415) 289-7325

WildCare (injured birds)
(415) 456-SAVE

HUMAN HEALTH

California Dept. of Public
Health, Environmental Health
Investigations Branch (Fish con-
sumption warnings)
(510) 620-3620
www.ehib.org

California Dept. of Public
Health, Environmental
Management Branch
(Shellfish Information
Hotline—warnings)
(800) 553-4133

SPONSORS

California Dept. of
Boating and
Waterways
2000 Evergreen St.,
Suite 100
Sacramento, CA 95815-3888
(888) 326-2822
www.dbw.ca.gov



San Francisco
Estuary Partnership
1515 Clay Street, Suite 1400
Oakland, CA 94612
(510) 622-2406
www.sfestuary.org



Design adapted from printed poster version, January 2011.

Designer: dcampeau.com
Illustrator: Daryl Collins
Writer: Ariel Okamoto
Editor: James Muller